

RSPCA  **SUFFOLK CENTRAL**



FUNDRAISING PACK
Hints and tips

THANK YOU

Firstly, thank you for looking into running a fundraising event to support the RSPCA Suffolk Central Branch.

In this pack you'll find helpful information on how best to promote yourself to gather sponsors, together with other fundraising ideas.

If you have any questions, please reach out to our team at fundraising@rspca-suffolkcentral.org.uk



JustGiving®

JustGiving is a quick and easy way to collect your sponsorship money and promote your fundraising efforts.

Setting up your JustGiving page is easy. Simply visit www.justgiving.com/create-page and follow the instructions below:

- Enter your details/create an account
- Ensure you select **RSPCA Suffolk Central Branch** (registered charity 206269) as the recipient of your fundraising
- Set your fundraising target (optional)!
- You will then be asked to share a few sentences about why you're raising money.
- Don't forget to tick the box for us to stay in touch -
- we can then let you know about any future events, rehoming news and branch updates!

If you'd like help with any copy or imagery to use on your fundraising page please contact our team on fundraising@rspca-suffolkcentral.org.uk



FUNDRAISING TIPS

Ask for donations instead of gifts for your birthday etc.

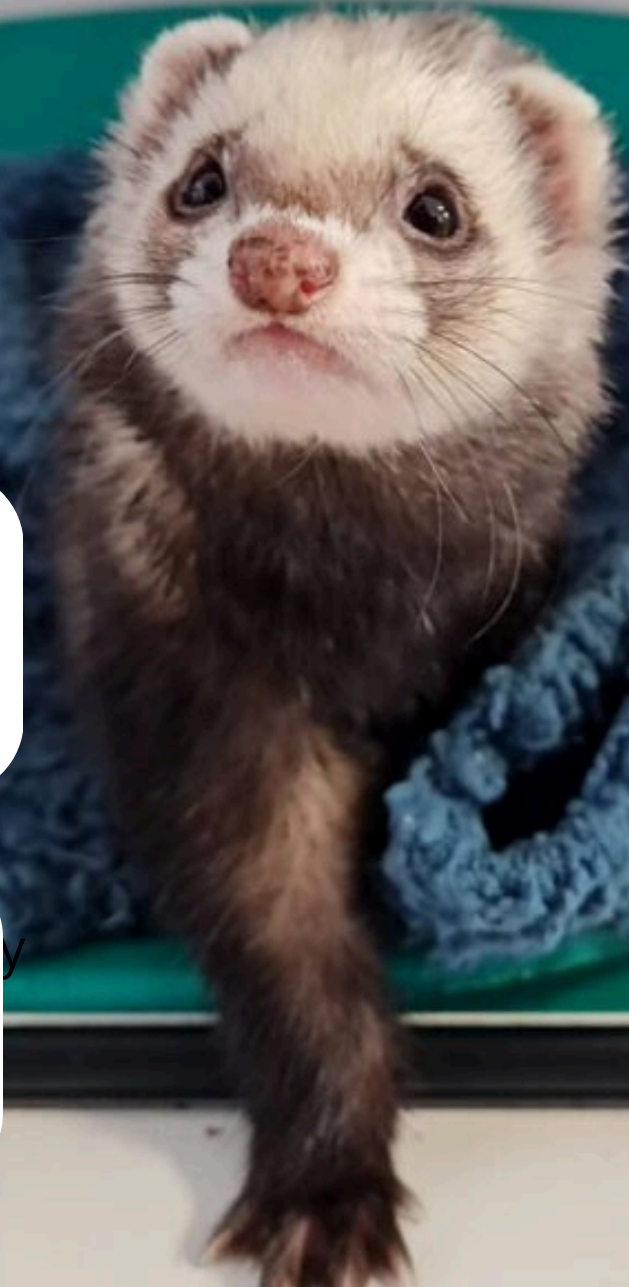
Put up posters at work/school/clubs using a JustGiving QR code

Post regular photos and videos to your social media channels

Don't be afraid to ask your friends, family and colleagues to get involved

Ask your employer to match what you raise - many companies have schemes for this purpose

Post reminders to donate online - especially around payday!



EVENT IDEAS

Hosting your own event is a great way of boosting your fundraising! Some ideas include:

- Hold a coffee morning or cake sale - everyone likes cake!
- Offer car washing or odd job services
- Sell unwanted goods at a car boot sale or on Vinted
- Run a raffle or tombola
- Host a bingo or quiz night
- Invite friends to a paid-for movie night (with popcorn)
- Run a name the bear/guess the weight competition.



giftaid it

Don't forget to encourage everyone that donates to your fundraising efforts to Gift Aid their donation.

Doing this could mean that if they are a UK tax payer you would generate 25p for every £1 donated!



TELL US ABOUT IT!

We would love to hear about your fundraising activity and would be happy to share it across our social media channels to help encourage donations.

Don't forget to tag us on social media:



@RSPCASuffolkCentral



@rspca_suffolkcentral



ABOUT US

The RSPCA Suffolk Central branch exists to help animals in need in our local area, through rehoming, rehabilitation and provision of services such as veterinary care, neutering, microchipping and advice.

We are a separately registered charity from the National RSPCA and are self funded through our own income generation and fundraising efforts.

It is a love for animals that keeps our branch running. Our team of passionate, committed staff and volunteers strive to do everything we can.

Together with our incredible supporters, here is what we achieved for pets in 2023:

- Over 300 found safety after being welcomed into our Martlesham Animal Centre
- 295 animals were rehomed
- 2,355 animals received veterinary care through our welfare clinics and voucher schemes.

2024 is a big year for the RSPCA

The RSPCA is celebrating its 200th anniversary in 2024, with lots of events and activities planned to help raise brand awareness and attract new supporters.

The logo for RSPCA's 200th anniversary, featuring the word 'RSPCA' in a bold, blue, sans-serif font above the number '200' in a similar font. The '200' is rendered in a stylized, blocky font with a blue outline and white fill.

Our impact

Thanks to RSPCA Suffolk Central, each year nearly 3,000 more animals enjoy a safe and happy life.

After suffering from abuse, abandonment or neglect, rescued animals are nurtured back to health at our Martlesham Animal Centre (MAC). Housing up to 100 dogs, cats, birds and small furies, the dedicated team builds a personalised recovery plan for each animal, helping them overcome their ordeal in a way that meets their individual physical and behavioural needs.

The animals in our care are given as much time and support as they need until they are ready to find a loving home of their own.

In the community over 2,500 pets a year live a healthier life thanks to our clinics and welfare assistance schemes that help ensure every animal has the opportunity to stay in their family home and benefit from the love and care they both need and deserve.



THANK YOU - AND GOOD LUCK!

RSPCA

£5 COULD PAY FOR A TOY AND TREAT FOR A CAT OR DOG WAITING FOR THEIR FOREVER HOME

£25 COULD PAY FOR A KITTEN OR PUPPY TO BE VACCINATED

£40 COULD HELP TOWARDS NEUTERING A CAT OR DOG

£65 COULD HELP PAY FOR AN INJURED ANIMAL TO BE X-RAYED AT AN RSPCA ANIMAL HOSPITAL

